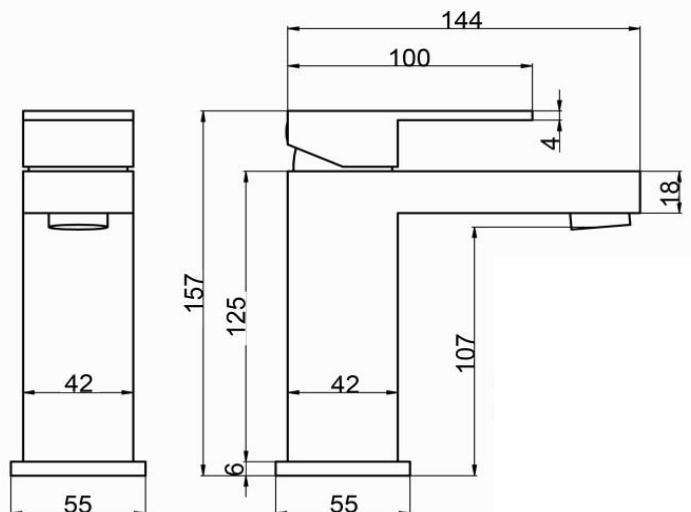
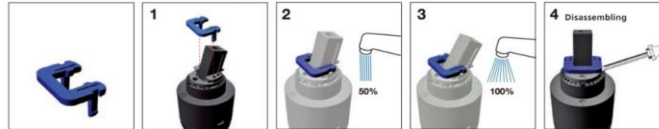


# TECHNICAL DATA SHEET

## PLAN Basin Mono Mixer

<b>Product Code</b>	TBTS-26-1202
<b>Construction</b>	Brass Body CuZn40Pb2, EN CW617N (equivalent to BS CZ122)
<b>Finishes</b>	Chrome plated to BS EN 248
<b>Product Type</b>	Contemporary
<b>Water Pressure</b>	Min. 0.2 bar, Max. 6.0 bar
<b>Plumbing Systems</b>	Suitable for all plumbing systems
<b>Standards</b>	Complies with BS5412, BS EN200
<b>Certification</b>	Manufactured to comply with WRAS
<b>Cartridge</b>	35mm Triduon ceramic disc cartridge
<b>Aerator</b>	Neoperl Adjustable Slim Air
<b>Fitting</b>	M10 x 350mm ½" BSP Female Flexi Tails
<b>Packaging</b>	46x28.5x34.5cm/carton(8pcs), Box size: 27.5x22x8.5cm, Weight: 1.875kg
<b>Guarantee</b>	15 years against manufacturing faults (excluding serviceable parts).
<b>Additional Information</b>	Incorporates water saving optional feature: Triduon Volume Limiter

Volume Limiter



### Flow Rates (Litres per minute)

System Pressure	0.1 Bar	0.2 Bar	0.3 Bar	0.5 Bar	1.0 Bar	1.5 Bar	2.0 Bar	3.0 Bar	5.0 Bar
	2.8	4.1	5.1	7.1	10.1	12.6	14.8	17.9	-

The information contained on this page was correct at date of issue. Fitting dimensions are provided as a guide only. Some variation may occur due to manufacturing tolerances. We pursue a policy of continuing improvement in design and performance of our products and so reserve the right to change specifications without prior notice.