

# Installation Instructions

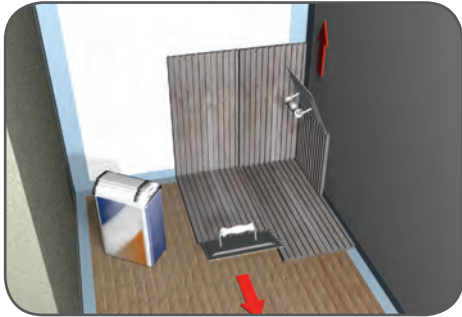
**Standard Shower Seat**  
**High Back Shower Seat**

## Fixing Materials required (not supplied)

- Board Fixing Adhesive
- Sealing & Mounting Adhesive

## Tools required (not supplied)

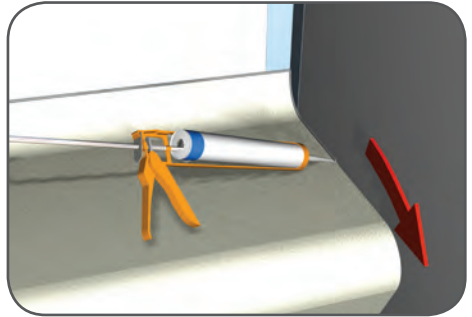
- 6mm Notched Adhesive Trowel
- Protective Gloves
- Eye Protection
- Breathing Protection
- Bucket
- Level
- Sealant Gun
- Measuring Jug



### Step 1

Mix a bag of board fixing adhesive (not supplied) with water in a clean bucket in line with the directions stated on the bag. Spread the board fixing adhesive onto the floor & up the adjoining wall of the seat location and drag the notched adhesive trowel across the surface. The notched adhesive trowel will make a ribbed pattern which will leave just the right amount of adhesive on the floor.

Place the seat into position and bed down onto the adhesive cement. Check that the seat is level.



### Step 2

Run a bead of sealant adhesive across the edges of the seat where they meet a wall.

Leave to set for approximately 12 hours after which the seating is ready for tiling.